

To Rent

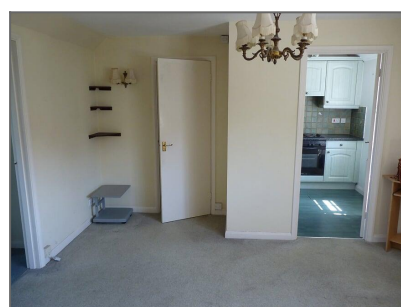
High Street, Burwash, Etchingham, TN19 7HA



£825

1 bedroom Flat

- ✓ One bedroom flat
- ✓ Detached building
- ✓ Village location
- ✓ Completely refurbished
- ✓ Spacious lounge
- ✓ Bedroom
- ✓ Bathroom with shower
- ✓ EPC = D



Description

This is a spacious and attractive one bedroom flat . Which has been refurbished and redecorated. The building is detached and this is the only flat above the village florists shop with its own entrance . The apartment enjoys far reaching views to the rear.

Sorry - no pets

Location

In the centre of Burwash village

Ground Floor

Private front door - Door into small hallway with stairs rising to the first floor

First Floor

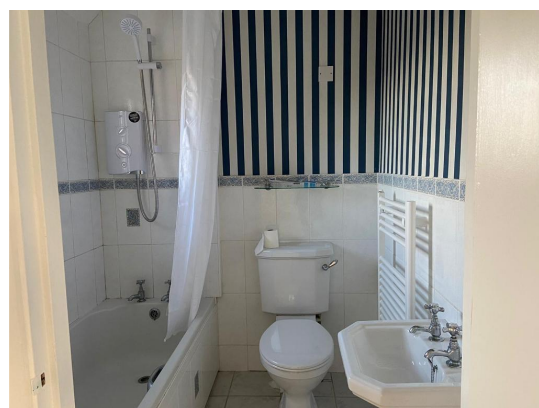
Lounge - 15'9 x 13' with windows to the front and side. Door into

Bedroom - 12'2 x 10'5 window to the rear with lovely views.

Kitchen - 8'1 x 7' with range of units. Electric oven and hob. Fridge. Space and plumbing for washing machine. Window to the front

Bathroom - Suite with electric shower over the bath.

Disclaimer: We do our best to ensure that our sales particulars are accurate and are not misleading. We also ask our clients to check their own sales particulars and verify the information. Therefore, these particulars, whilst believed to be accurate are set out as a general outline for guidance only and do not constitute any part of an offer or contract. Intending purchasers should not rely on them as statements or representation of fact, but must satisfy themselves by inspection or otherwise as to their accuracy. We have not carried out a detailed survey nor tested the services, appliances and specific fittings. Room sizes should not be relied upon for carpets and furnishings, and the measurements given are approximate.



Energy Efficiency and Environmental Impact

| Energy Efficiency Rating | | | |
|--------------------------|---------------|---------|-----------|
| Score | Energy rating | Current | Potential |
| 92+ | A | | |
| 81-91 | B | | |
| 69-80 | C | | |
| 55-68 | D | 55 D | 69 C |
| 39-54 | E | | |
| 21-38 | F | | |
| 1-20 | G | | |